

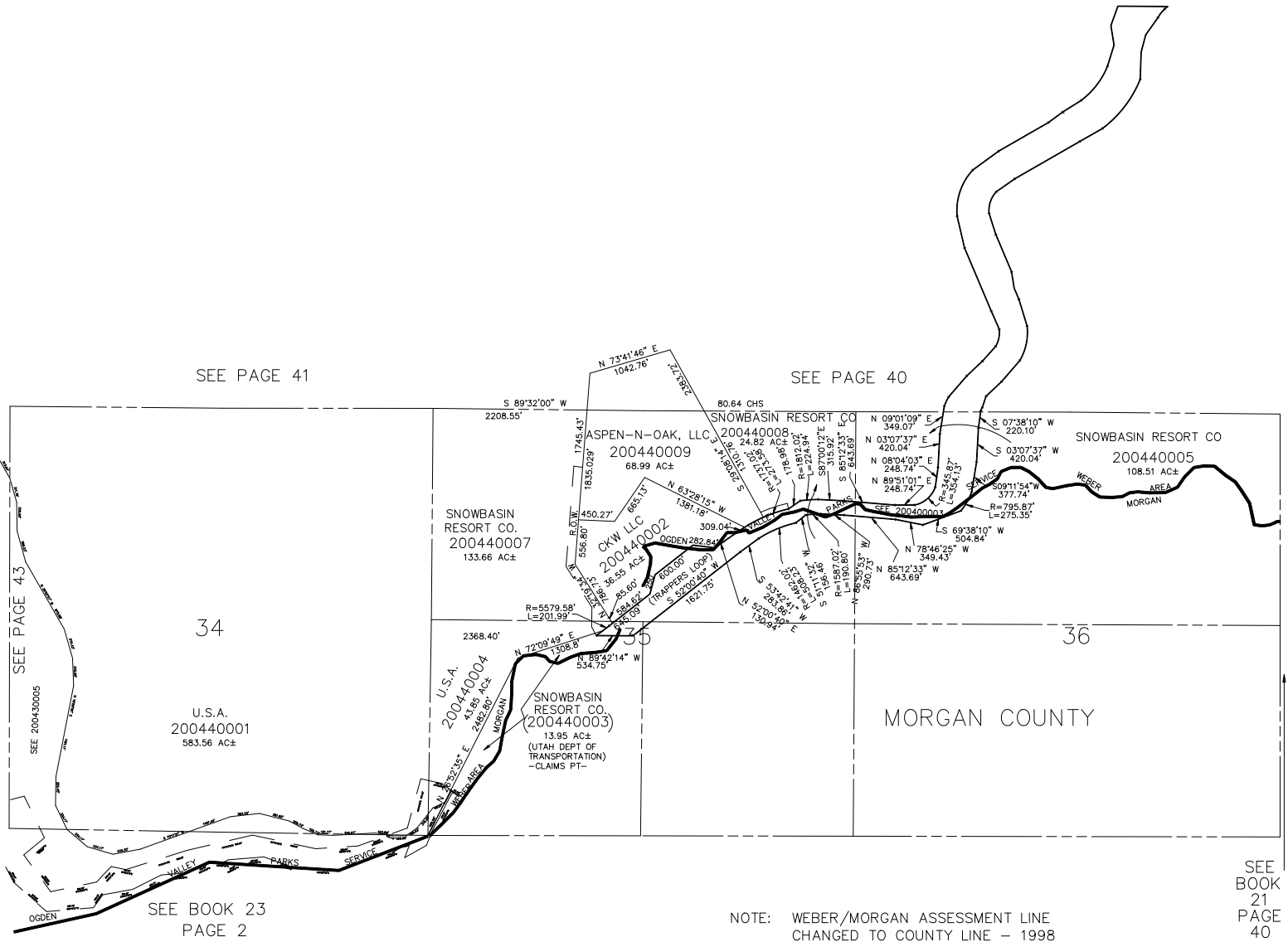
SECTIONS 34, 35, & 36, T.6N., R.1E., S.L.B. & M.

WEBER COUNTY  
SCALE 1" = 1000'

TAXING UNIT: 520

SEE PAGE 41

SEE PAGE 40



NOTE: WEBER/MORGAN ASSESSMENT LINE  
CHANGED TO COUNTY LINE - 1998

SEE  
BOOK  
21  
PAGE  
40